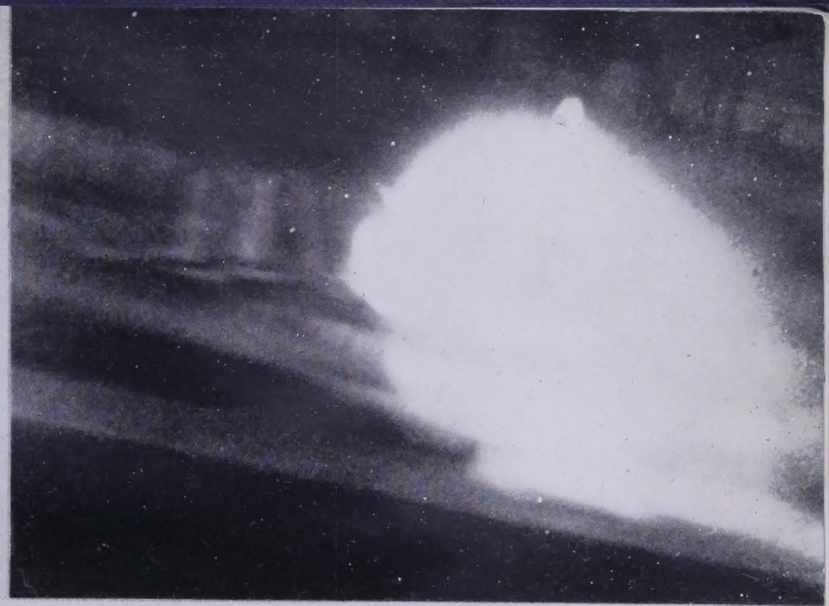




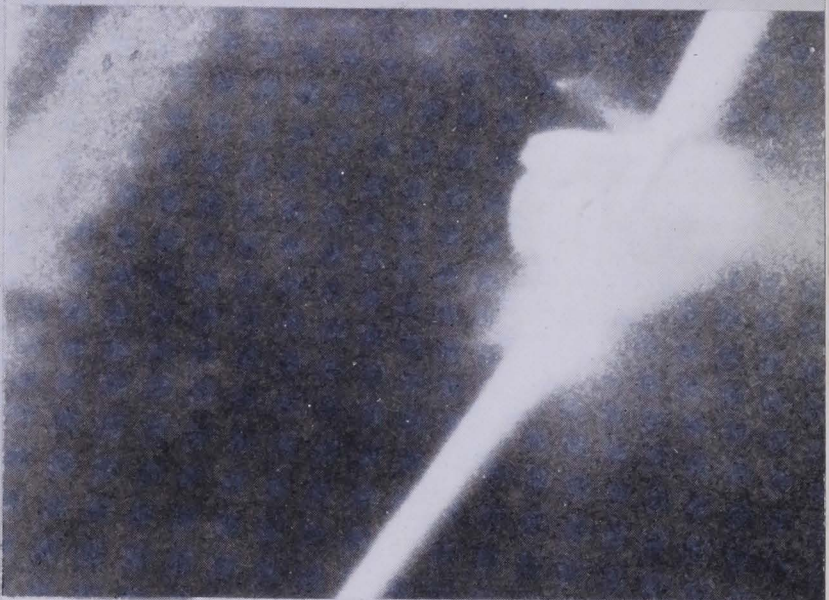
JU 88 IS CERTAIN VICTIM AS LT. COL.
J. J. OBERHANSLEY BEARS DOWN ON IT



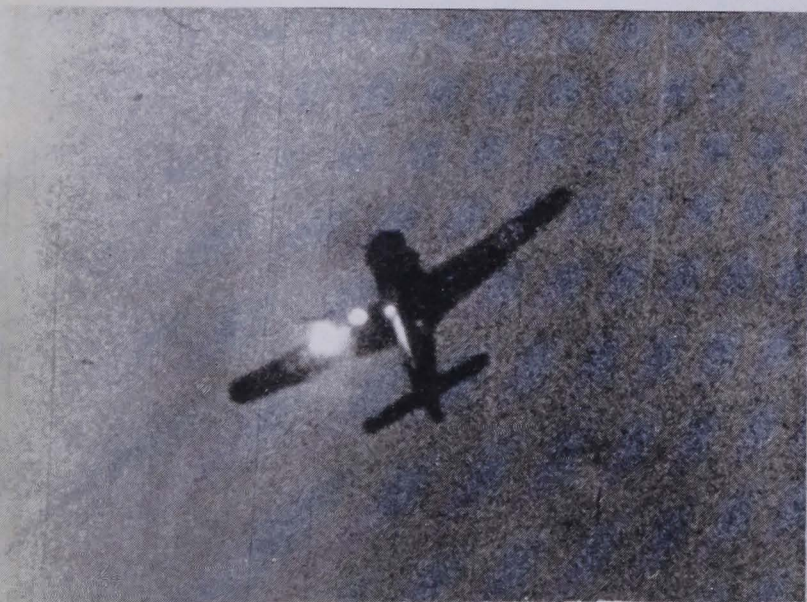
EXPLOSION PRODUCES DOUBLE IMAGE OF ME 210'S
TAIL AS MAJ. N. D. MUNSON STRAFES THE PLANE



CAPT. A. F. EATON ACCOUNTED FOR THIS
JU 88 IN JULY, 1944



CAPT. W. F. COLEMAN SHOT DOWN THIS
FW 190 IN SEPT., 1944



CAPT. R. T. GREEN SCORES HITS
ON WING OF FW 190



FREIGHT CAR, PROBABLY CARRYING AMMUNITION,
EXPLODES AS LT. L. H. HOSFORD JR. STRAFES IT